

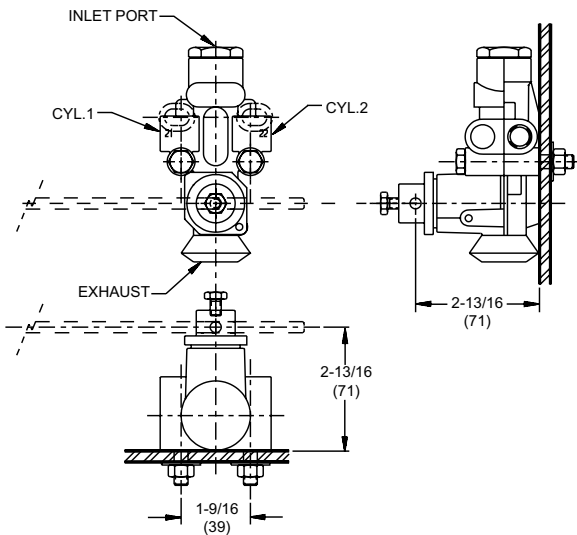
Height control valves

**KD2356 Replaces: WABCO S464 002 443-0
Midland KN 27000**



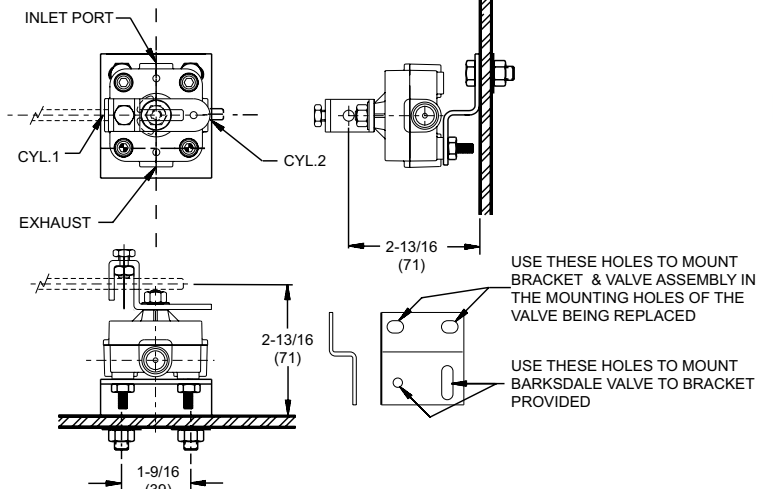
- ▶ Chassis Air Ride Applications
- ▶ 1/4" NPT Ports
- ▶ Bolt-in installation
- ▶ No drilling required

WABCO OR MIDLAND VALVE



BARKSDALE REPLACEMENT VALVE

BRACKET INTERCHANGEABLE WITH WABCO/MIDLAND VALVES



HEIGHT CONTROL VALVE

REPLACEMENT KIT WABCO S464 002 443-0 / MIDLAND KN 27000

CONTENTS FOR KIT KD2356:

1. 52321-Q295 Valve
2. Bracket, Wabco
3. Nuts (2), 1/4"
4. Washers (2), 1/4"
5. Centering Pin
6. Plug
7. Instructions
8. Nuts (2), 5/16"
9. Washers (2), 5/16"
10. Screws (2), 5/16"
11. Barbed Fitting
12. 4" Tubing
13. Leveling Arm
14. P- Mount
15. Clamp

INSTRUCTIONS:

Caution: Air Lines are under pressure and air may blow debris.

Drain all air from Air Tanks and Air Bags.

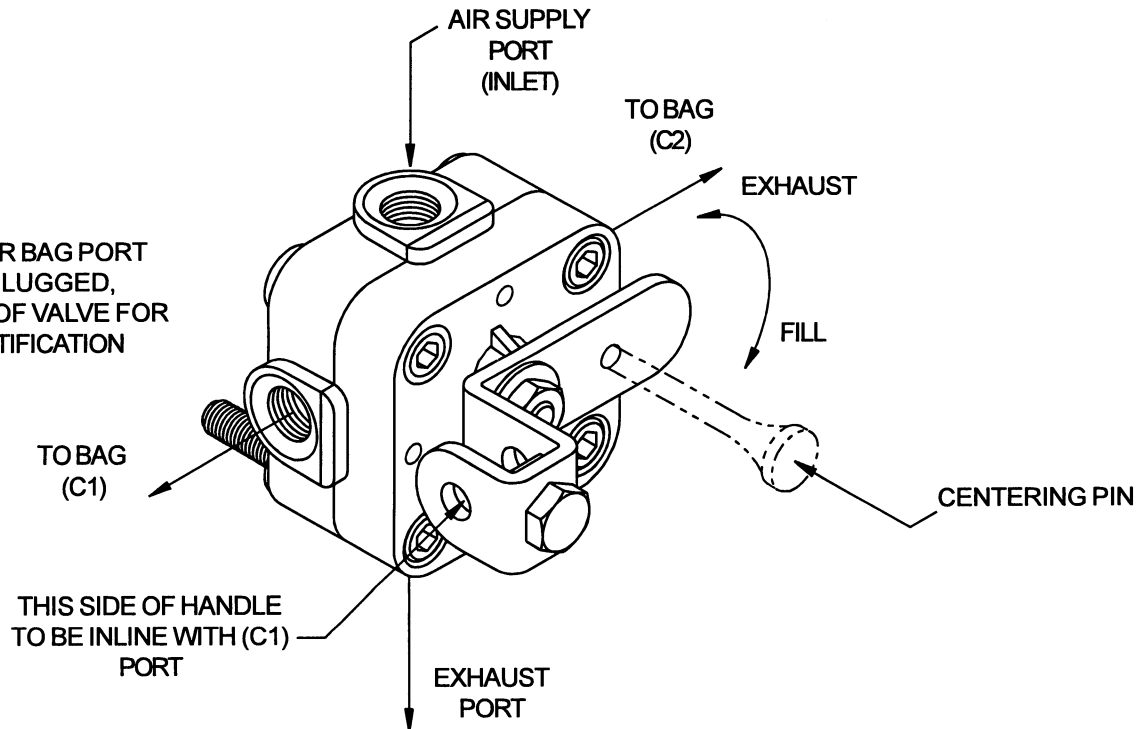
Disconnect the Linkage from the Valve, replace worn and bent hardware.

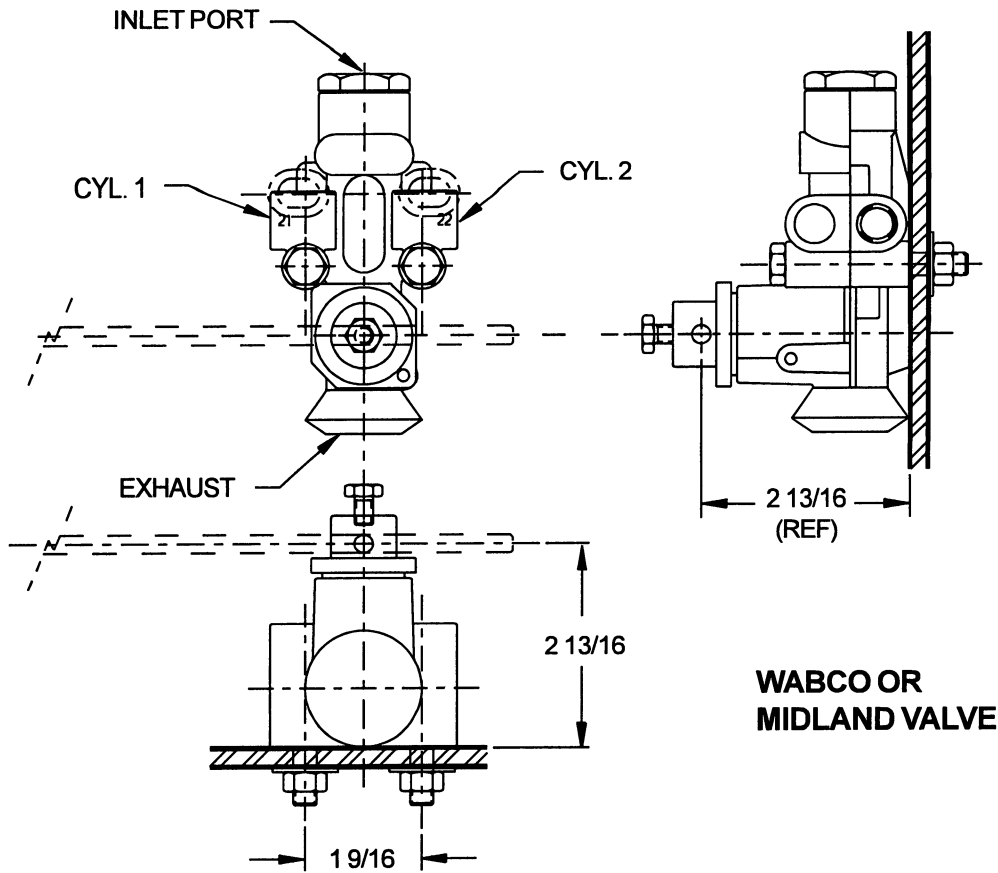
Disconnect the Air Lines to the Air Suspension Valve.

Save Air Line nuts, ferrules and fittings to use on new valve.

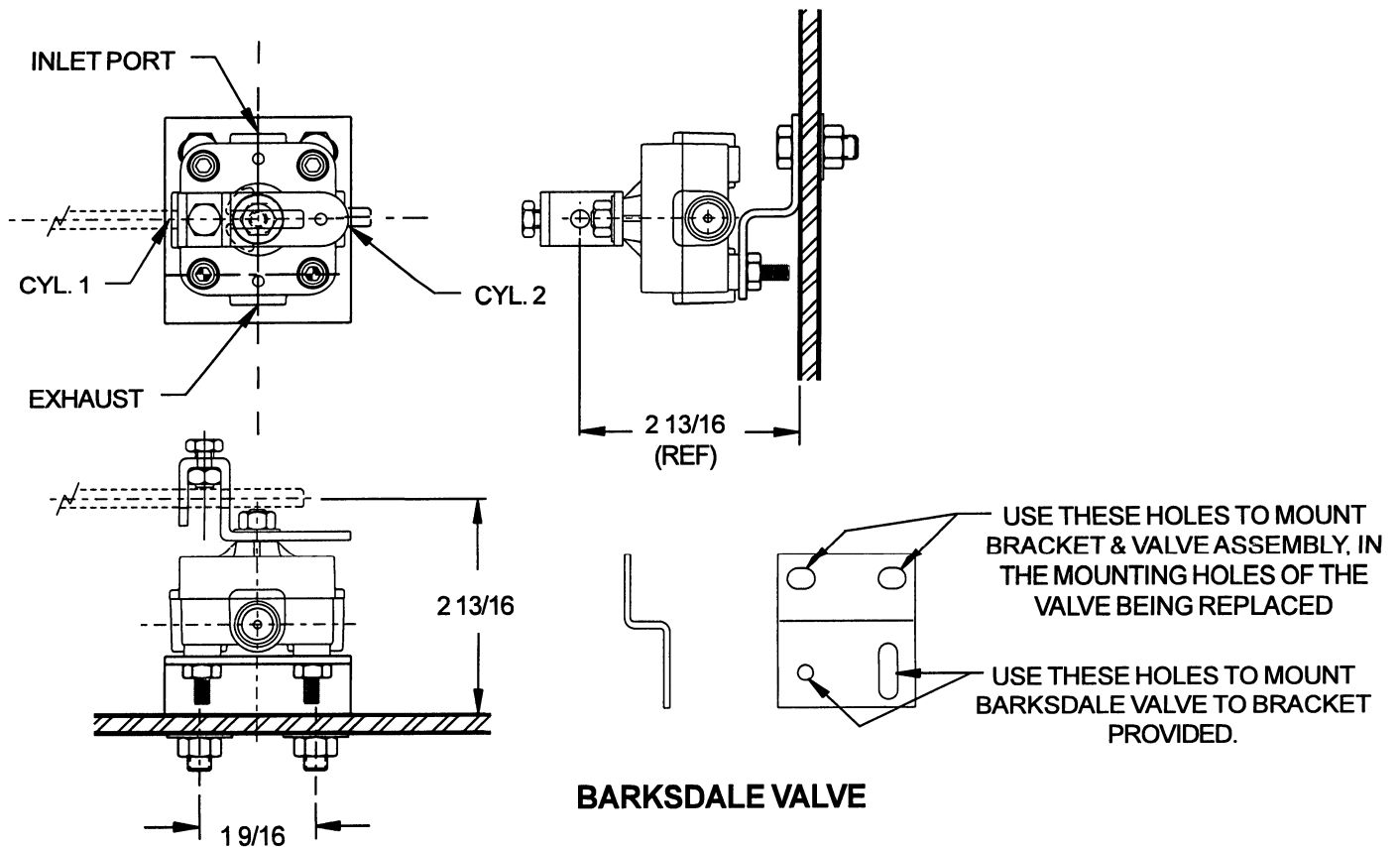
1. Remove valve and identify the manufacturer of the valve being replaced.
2. Mount the Barksdale Valve on the Bracket provided. See illustrations on back.
3. Remove Fittings from valve being replaced and install fittings onto the inlet, C1 and C2 Delivery parts. If elbow fittings are used, position fittings to connect with existing air lines as requested.
4. Mount the Bracket/Valve Assembly in the holes used to mount the valve being replaced. See illustrations on back.
5. Only snug tighten Nuts as a Valve may need to be rotated to adjust ride height.
6. Reconnect the Air Lines to the new Valve.
7. The Air Lines may have to be re-routed to connect to the supply and outlet fittings. The air supply is always connected to the top port in the valve. This allows air to inflate the bags when the arm is in the up position.
8. Adjust to approximate ride height by turning the Valve handle up to add air to the bags, down to exhaust air from the Air Bags..
9. Attach tubing to Barbed Fitting and assemble into bottom exhaust port.
10. Install Centering Pin in holes provided in Valve handle.
11. Reconnect the Linkage Assembly to the Valve.
12. Adjust final ride height using the Truck Manufacturer's recommended height.
13. Tighten all Nuts to 45 Lb. In. Torque.
14. Remove Centering Pin.

NOTE: EITHER BAG PORT
MAY BE PLUGGED,
SEE BOTTOM OF VALVE FOR
PORT IDENTIFICATION





BRACKET INTERCHANGEABLE WITH WABCO/MIDLAND VALVES



VIEW FROM THE REAR OF THE TRUCK LOOKING FORWARD