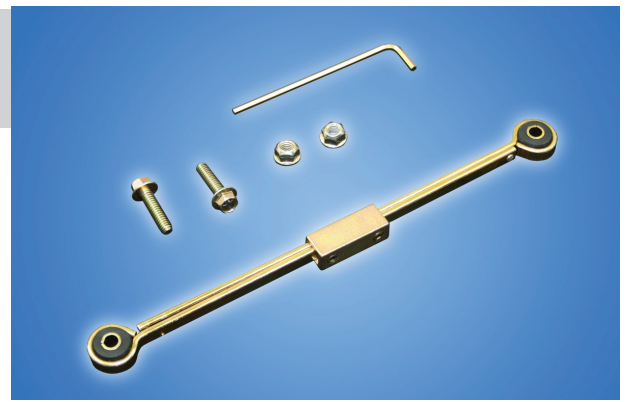


KWIK-LINK™ 915 Kit /1526 Kit

Adjustable Height Control and Leveling Valve Linkage



Linkage Reinvented

Meet the world's fastest and most accurate replacement linkage kit.

Saving time, money and energy has never been easier.

Benefits:

- Fast-adjustment and easy installation
- Safe-No cutting required
- Convenient – 915 Kit replaces 9" to 15" (230-380mm) lengths. 1526 Kit replaces 15" to 26" (380-660mm) lengths.
- No additional tools required
- Replaces most commonly used brands and styles of Linkage
- Proven design-No unsupported rubber ends to break

Features:

- Long Service Life
- High Quality Steel and Lined Elastomer Bushings
- Links are coated for corrosion protection
- Provides vibration and shock noise attenuation
- Allows +/- 10 Degrees of Torsional Rotation
- Added flexibility to prevent damage to expensive valve

Package Contents:

- (1) Kwik-Link Adjustable Link Assembly
- (2) Hex Flanged Bolts (1/4"-20x1")
- (2) Hex Flanged Lock Nuts (1/4"-20)
- (1) Hex Key (1/8")
- (1) Fold-out Setting Scale

Installation Instructions:

Note: Links are typically measured from center to center of mounting holes.

Step 1

Determine required Link length using any of the following:

- Obtain from Vehicle Specifications
- If the original Link is available, measure it using the included foldout scale. Set Kwik-Link to the same length.
- Set old link next to Kwik-Link and adjust until length matches.
- If required length is not available, follow vehicle manufacturer's instructions for measuring length needed.

Step 2

Slide the two links together to reach the desired length. Center Link Connector between the two link ends. Using the supplied 1/8" Hex Key tighten two screws in connector until secure (Ref. 40-45 in lbs./4.5-5 Nm)

Step 3

Use 1/4" Flanged Bolts and Lock Nuts to attach Kwik-Link to the Valve. 1/4" Bolts and Nuts can also be used to attach to the lower Axle Tab or 1/4" stud. Tighten to 70 - 80 inch lbs. (8-9 Nm) Note shoulder style bolts should not be used as Kwik-Link is supplied with steel support bushings.

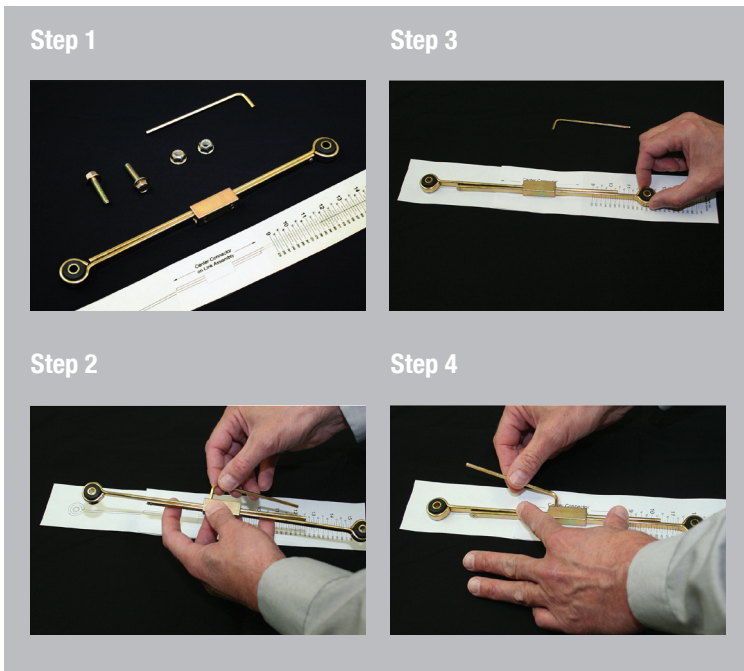
Step 4

After supplying air to the suspension system, check vehicle height as compared to the vehicle manufacturer's requirements.

If additional adjustment is required, scribe a line between the two links, loosen connector screws and slide the links as needed to correct the height. Tighten the two connector screws as in step 2 above.

Step 5

After Kwik-Link is installed check for any interference with the Valve Control Arm or Linkage and correct as necessary.



Our Kwik-Link Kits will have you up-and-running the fastest.



Dayton Air Control Products, LLC
2785 Lance Dr.
Dayton, OH 45409
Toll Free: 800.831.1893
EMAIL: info@levelingvalve.com

www.levelingvalve.com