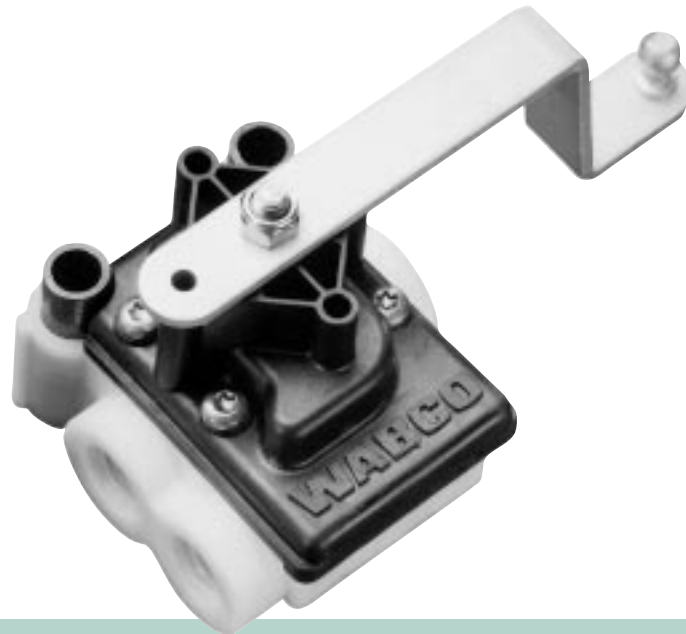


Cab Leveling Valve



Product Summary

The Meritor WABCO cab leveling valve is designed to help preserve the correct cab position and provide driver comfort in vehicles with cab air suspensions. Responding to the cab load and changes in road conditions, this valve works to maintain proper levels in the cab air suspension system.

Applications

This cab leveling valve is used in the heavy-duty trucking industry on vehicles equipped with cab air suspension systems.

Product Functions

The Meritor WABCO cab leveling valve is mounted to the vehicle frame with the operating lever connected to the cab via a linkage. The relative movement of the cab, caused by cab load and road conditions, is transmitted to the valve via the operating lever.

The motion of the operating lever controls the movement of an internal valve which in turn controls the flow of air to the air bellows. This valve is a ceramic, two-piece design mechanism which allows a regulated air flow based on the movement of the lever. At minimum lever travel, the valve design allows only minimal air consumption. This means that the valve reacts to normal road conditions and minor load shifts with a limited flow of air. However, when the lever travel is greater, the ceramic valve allows a greater air flow to the cab suspension bellows. The allowable lever travel is $\pm 50^\circ$ from the neutral position.

Features	Benefits
Engineered polymer construction	Lightweight, compact, corrosion-resistant design
Ceramic valve	Provides consistent performance throughout valve life
Engineered polymer body	Resistance against high temperature which protects against valve malfunction, improves reliability, and promotes long service life
Valve characteristics can be adapted to meet specific customer needs	Design of the flow characteristics can be easily changed
Two stage valve design	Maximum air consumption achieved only at major operating lever deflection, not under normal driving conditions
Through holes for mounting	Flexibility in mounting positions
Two delivery ports are standard	Reduces the number of fittings
Push-to-connect fittings available (pre-assembled)	Ease of installation
Levers available in various shapes and lengths	Ease of mounting and increased flexibility

MERITOR WABCO

Meritor WABCO components are integral members of **Drivetrain Plus™ by Meritor**, the industry's most complete drivetrain. For more information, call: **800-535-5560, desde Mexico: 001-800-889-1834.**